

# NUMERICAL METHODS FOR FULLY NONLINEAR FREE SURFACE WAVES

DENYS DUTYKH<sup>1</sup> & CLAUDIO VIOTTI<sup>1</sup>

<sup>1</sup>University College Dublin  
School of Mathematical Sciences  
Belfield, Dublin 4, Ireland

Short Course on “*Modeling of Nonlinear Ocean Waves*”



# OUTLINE OF THE SHORT COURSE

## 1 LECTURE 1

- Introduction (D.D.)
- BIEM (C.V.)
- Spectral CG-method (D.D.)

## 2 LECTURE 2

- Higher-Order Spectral (HOS) methods (D.D.)
- Dirichlet-to-Neumann (D2N) operator technique (D.D.)
- Conformal mappings (C.V.)

### REMARK:

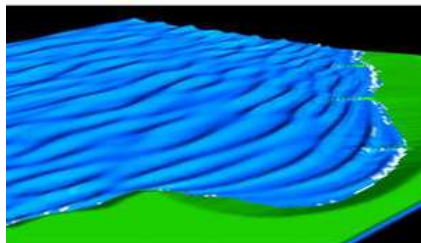
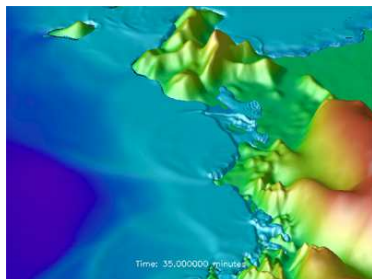
Focus only on numerical methods for the full Euler equations

- ▶ No asymptotic models

# WHAT WE WILL NOT COVER IN THIS COURSE:

SELF-LEARNING IS YOUR FRIEND!

- ▶ The first modern spectral method for water waves by Rienecker & Fenton (1981-1982) [RF81, FR82]
- ▶ Methods based on eigenfunctions expansions
  - ▶ Coupled-mode approach by Belibassakis & Athanassoulis [AB99, BA06]
- ▶ Finite difference-based methods
- ▶ Any kind of meshless methods



# PHYSICAL ASSUMPTIONS

## MATHEMATICAL MODELING

### PHYSICAL ASSUMPTIONS:

- ▶ Fluid is ideal (inviscid) ( $Re = \infty$ )
- ▶ Fluid is homogeneous ( $\rho_w = \text{const}$ )
- ▶ Flow is incompressible ( $\nabla \cdot \underline{u} = 0$ )
- ▶ Flow is potential ( $\underline{u} = \nabla \phi$ )

### INTERFACE CONDITIONS:

- ▶ Interface is a graph:  $y = \eta(\underline{x}, t)$
- ▶ Air effect is neglected ( $\rho_a \ll \rho_w$ )
- ▶ Free surface is isobaric

### BASIC MODEL:

- ▶ Incompressible Euler equations with free surface



# EULER EQUATIONS

WITH FREE SURFACE

- ▶ Incompressibility:

$$\nabla \cdot \underline{u} = \nabla \cdot (\nabla \phi) = \nabla^2 \phi = 0$$

- ▶ Momentum conservation:

$$\underline{u}_t + (\underline{u} \cdot \nabla) \underline{u} + \frac{\nabla \rho}{\rho} = \mathbf{g}$$

$$\phi_t + \frac{1}{2} |\nabla \phi|^2 + gz + \frac{\rho}{\rho} = B(t)$$



## BOUNDARY CONDITIONS:

$$\eta_t + \underline{u} \cdot \nabla \eta = v, \quad z = \eta(\underline{x}, t)$$

$$\rho = 0, \quad z = \eta(\underline{x}, t)$$

$$v_n = \underline{u} \cdot \underline{n}_b = 0, \quad z = -d(\underline{x})$$

# WATER WAVE PROBLEM

## POTENTIAL FLOW FORMULATION

- ▶ Continuity equation

$$\nabla^2 \phi = 0, \quad (\underline{x}, y) \in \Omega \times [-d(\underline{x}), \eta(\underline{x}, t)],$$

- ▶ Kinematic bottom condition

$$\frac{\partial \phi}{\partial y} + \nabla \phi \cdot \nabla d = 0, \quad y = -d,$$

- ▶ Kinematic free surface condition

$$\frac{\partial \eta}{\partial t} + \nabla \phi \cdot \nabla \eta = \frac{\partial \phi}{\partial y}, \quad y = \eta(\underline{x}, t),$$

- ▶ Dynamic free surface condition

$$\frac{\partial \phi}{\partial t} + \frac{1}{2} |\nabla \phi|^2 + g\eta = 0, \quad y = \eta(\underline{x}, t).$$



FIGURE: Laplace

# HAMILTONIAN STRUCTURE

PETROV (1964) [PET64]; ZAKHAROV (1968) [ZAK68]; CRAIG & SULEM (1993) [CS93]

## CANONICAL VARIABLES:

$\eta(\underline{x}, t)$ : free surface elevation

$\varphi(\underline{x}, t)$ : velocity potential at the free surface

$$\varphi(\underline{x}, t) := \phi(\underline{x}, y = \eta(\underline{x}, t), t)$$

- ▶ Evolution equations:

$$\rho \frac{\partial \eta}{\partial t} = \frac{\delta \mathcal{H}}{\delta \varphi}, \quad \rho \frac{\partial \varphi}{\partial t} = -\frac{\delta \mathcal{H}}{\delta \eta},$$

- ▶ Hamiltonian:

$$\mathcal{H} = \int_{-d}^{\eta} \frac{1}{2} |\nabla \phi|^2 dy + \frac{1}{2} g \eta^2$$

## APPLICATION TO NUMERICS:

Used in D2N operator methods: [CS93, GN07, XG09]

# LUKE'S VARIATIONAL PRINCIPLES

J.C. LUKE, JFM (1967) [LUK67]

- ▶ First improvement of the classical Lagrangian  $\mathcal{L} := K - \Pi$ :

$$\mathcal{L} = \int_{t_1}^{t_2} \int_{\Omega} \rho \mathcal{L} \, d\underline{x} \, dt, \quad \mathcal{L} := \int_{-d}^{\eta} (\phi_t + \frac{1}{2} |\nabla \phi|^2 + gy) \, dy$$

$$\delta\phi: \Delta\phi = 0, \quad (\underline{x}, y) \in \Omega \times [-d, \eta],$$

$$\delta\phi|_{y=-d}: \frac{\partial\phi}{\partial y} + \nabla\phi \cdot \nabla d = 0, \quad y = -d,$$

$$\delta\phi|_{y=\eta}: \frac{\partial\eta}{\partial t} + \nabla\phi \cdot \nabla\eta - \frac{\partial\phi}{\partial y} = 0, \quad y = \eta(\underline{x}, t),$$

$$\delta\eta: \frac{\partial\phi}{\partial t} + \frac{1}{2} |\nabla\phi|^2 + g\eta = 0, \quad y = \eta(\underline{x}, t).$$

- ▶ Water wave problem formulation is recovered from  $\mathcal{L}$

## APPLICATION TO NUMERICS:

- ▶ Not fully explored...
- ▶ Coupled-mode technique by B. & A. (2006) [BA06]



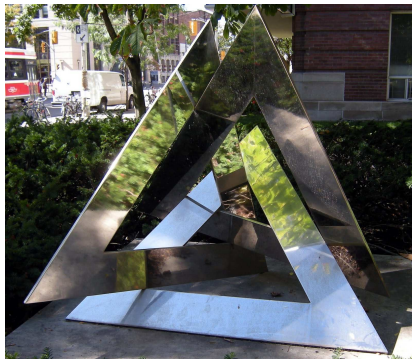
# WHY THIS PROBLEM IS DIFFICULT?

## OUTLINE OF SOME NUMERICAL DIFFICULTIES

- ▶ Problem is highly nonlinear
- ▶ Computational domain is unknown ( $y = \eta(\underline{x}, t)$  to be determined)
- ▶ Formulation is stiff (Hamiltonian structure)
- ▶ Taylor expansions involve very high derivatives
- ▶ Physical and numerical instabilities
- ▶ No dissipation to stabilize computation
- ▶ Overturning surface...



To be continued by Claudio...



<http://www.denys-dutykh.com/>

# REFERENCES I



G. A. Athanassoulis and K. A. Belibassakis.

A consistent coupled-mode theory for the propagation of small-amplitude water waves over variable bathymetry regions.

*J. Fluid Mech*, 389:275–301, 1999.



K. A. Belibassakis and G. A. Athanassoulis.

A coupled-mode technique for weakly nonlinear wave interaction with large floating structures lying over variable bathymetry regions.

*Applied Ocean Research*, 28(1):59–76, February 2006.



W. Craig and C. Sulem.

Numerical simulation of gravity waves.

*J. Comput. Phys.*, 108:73–83, 1993.

## REFERENCES II



J. D. Fenton and M. M. Rienecker.

A Fourier method for solving nonlinear water-wave problems: application to solitary-wave interactions.  
*J. Fluid Mech.*, 118:411–443, April 1982.



P. Guyenne and D. P. Nicholls.

A high-order spectral method for nonlinear water waves over moving bottom topography.  
*SIAM J. Sci. Comput.*, 30(1):81–101, 2007.



J. C. Luke.




A variational principle for a fluid with a free surface.  
*J. Fluid Mech.*, 27:375–397, 1967.



A. A. Petrov.

Variational statement of the problem of liquid motion in a container of finite dimensions.  
*Prikl. Math. Mekh.*, 28(4):917–922, 1964.

## REFERENCES III

-  M. M. Rienecker and J. D. Fenton.  
A Fourier approximation method for steady water waves.  
*J. Fluid Mech.*, 104:119–137, April 1981.
-  L. Xu and P. Guyenne.  
Numerical simulation of three-dimensional nonlinear water waves.  
*J. Comput. Phys.*, 228(22):8446–8466, 2009.
-  V. E. Zakharov.  
Stability of periodic waves of finite amplitude on the surface of a deep fluid.  
*J. Appl. Mech. Tech. Phys.*, 9:190–194, 1968.